



A Single Software Platform For Sensor Health And Performance Management

Grid reliability begins with healthy endpoints and reliable data transmission. Using Landis+Gyr's Gridstream® Connect IoT platform, TechStudio provides commissioning, testing, and modification capability for RF network devices, including street light controllers, electric meters, gas/water modules, and line sensors, all from a single software platform. TechStudio also performs initial radio configuration, status checks of installed radios, and provides detailed network reports.

Windows-based TechStudio runs on a laptop or PC, using a portable Comms Adapter to provide RF communication to radios and endpoints. Role-based authorization allows utilities to tailor users' access to various tools based on job functions to ensure maximum efficiency and security.

FEATURES

- Built-in automation of device preparation and test
- Meter shop testing to qualify orders
- Facilitates troubleshooting of radios & data acquisition
- Role-based user authorization for feature access
- Supports OTA meter program downloads and automatic OTA firmware upgrades
- Supports RF Mesh, Mesh IP, Wi-SUN
- Includes API to write custom automation software
- Supports one-way gas modules with Work Order Management integration
- Global platform in use across North America, South America, and Asia Pacific regions
- Localization features native support for English and Portuguese

AUTOMATE THE METER SHOP

- Create test profiles to run automatically, saving time, and ensuring consistent coverage
- Set device installation mode to streamline commissioning
- Take advantage of wide range of reports for RF module and metrology to:
 - Facilitate troubleshooting
 - Assist with product acceptance
- Acquire meter reads, send directly to Command Center
 - Preserve data integration across apps such as MDM

EFFICIENT OVER-THE-AIR ACCESS

- Automatically update metrology and RF firmware over the air (OTA), ensuring latest versions/features available



AUTOMATED METER SHOP

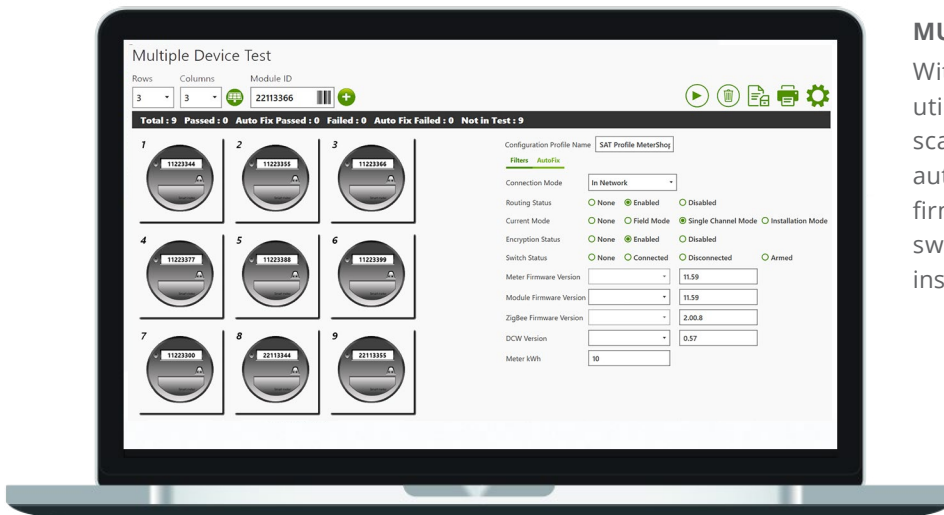


EFFICIENT OVER-THE-AIR ACCESS

- RF Mesh, Mesh IP, and Wi-SUN support for full cross-platform comms coverage
- Send/review one-time execution apps (small DCWs) for discrete testing
- OTA download and retrieval of new meter programs from device to streamline meter management

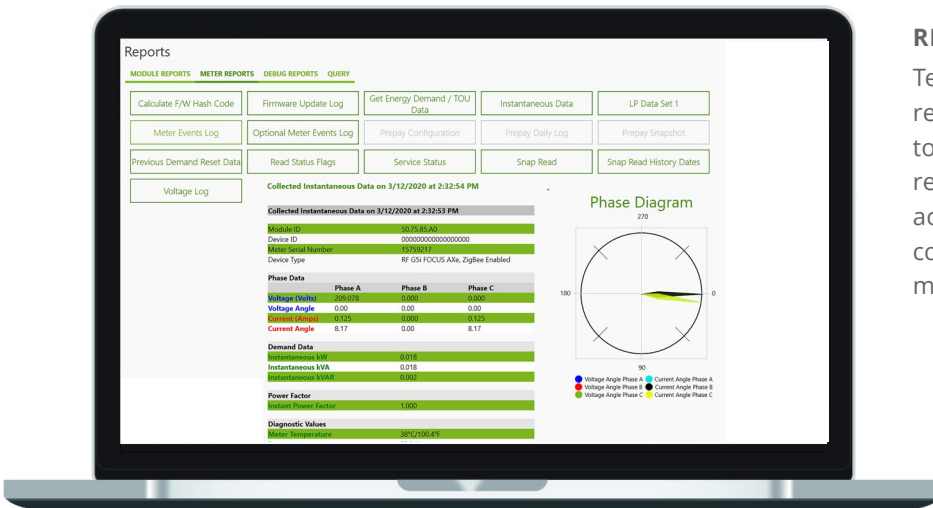
RECOMMENDED PC SPECIFICATIONS

- Windows 10 with 8 GB RAM and 2 GB disk storage
- High-speed internet connection to download pre-requisite software
- USB port to connect to local radio



MULTIPLE DEVICE TEST

With the multiple device testing feature, utilities can create testing profiles, scan the meter wall, and let TechStudio automatically run tests, upgrade firmware, monitor service disconnect switch status, and set device to installation mode.



REPORTS

TechStudio offers a wide range of reports for RF modules and metrology to facilitate troubleshooting. Advanced reports also assist with product acceptance testing by relating error counters, neighbor statistics, event logs, metering data, and more.

GET IN TOUCH.

For more information and nationwide warranty terms, visit us at landisgyr.com or call us at 888-390-5733.



LET'S BUILD A BRIGHTER FUTURE TOGETHER

Since 1896, Landis+Gyr has been a global leader of energy management solutions. We've provided more than 3,500 utility companies all over the world with the broadest portfolio of products and services in the industry. With a worldwide team of 1,300+ engineers and research professionals, as well as an ISO certification for quality and environmental processes, we are committed to improving energy efficiency, streamlining operations, and improving customer service for utility providers.